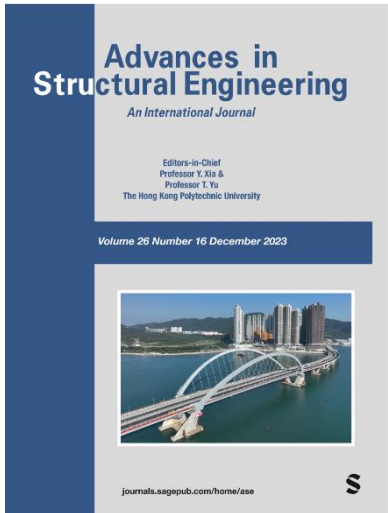
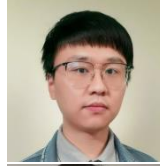


## Call for Papers in Advances in Structural Engineering (SCIE, IF=2.6)

### Special Issue: **AI-driven Monitoring and Condition Assessment for Enhancing Infrastructure Resilience**



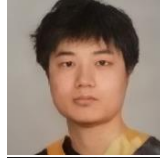
#### Guest Editors



Li Ai, Ph.D.

University of South Carolina, USA

Email: [ail@email.sc.edu](mailto:ail@email.sc.edu)



Xiao Tan, Ph.D.

Stevens Institute of Technology, USA

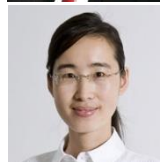
Email: [xtan8@stevens.edu](mailto:xtan8@stevens.edu)



Arslan Akbar, Ph.D.

Pennsylvania State University, USA

Email: [aba6457@psu.edu](mailto:aba6457@psu.edu)



Guirong (Grace) Yan, Ph.D.

Missouri University of Science and Technology, USA

Email: [yang@mst.edu](mailto:yang@mst.edu)

#### Timeline:

- Paper submission open: Dec 15, 2023
- Paper submission close: May 31, 2024

In modern urban environments, the health of structural infrastructure – encompassing roads, bridges, tunnels, and other critical elements – is crucial for the everyday functioning and well-being of city residents. These infrastructures, key to seamless operation and economic vitality, are currently facing challenges from climate change, urbanization, aging, and natural hazards. The development of structural health monitoring (SHM), non-destructive testing (NDT), digital twins, and novel functional construction materials has become critical. Artificial Intelligence (AI) is increasingly central in these areas, offering advanced solutions for real-time monitoring, condition assessment, and ensuring the resilience of these vital infrastructures. The encouraged topics include but are not limited to:

1. Recent advancements in structural health monitoring and sensor technologies.
2. Digital twins and AI methods relevant to resilient infrastructures.
3. Design principles for resilient infrastructure.
4. Retrofitting and upgrading of aging infrastructures
5. Innovative functional construction materials

The submission is open now! The prospective authors are encouraged to submit their manuscripts online to *Advances in Structural Engineering* through link <https://mc.manuscriptcentral.com/aise> and select “Special Issue in AI”. The manuscripts will go through regular peer review process before being accepted. Please visit the journal website for additional instructions

*Advances in Structural Engineering* was launched in 1997 and has become one of the major international journals in the field of structural engineering field; the journal is indexed in many widely accessed databases, including *SCI*, *Scopus*, *EI*, and *ProQuest*.